

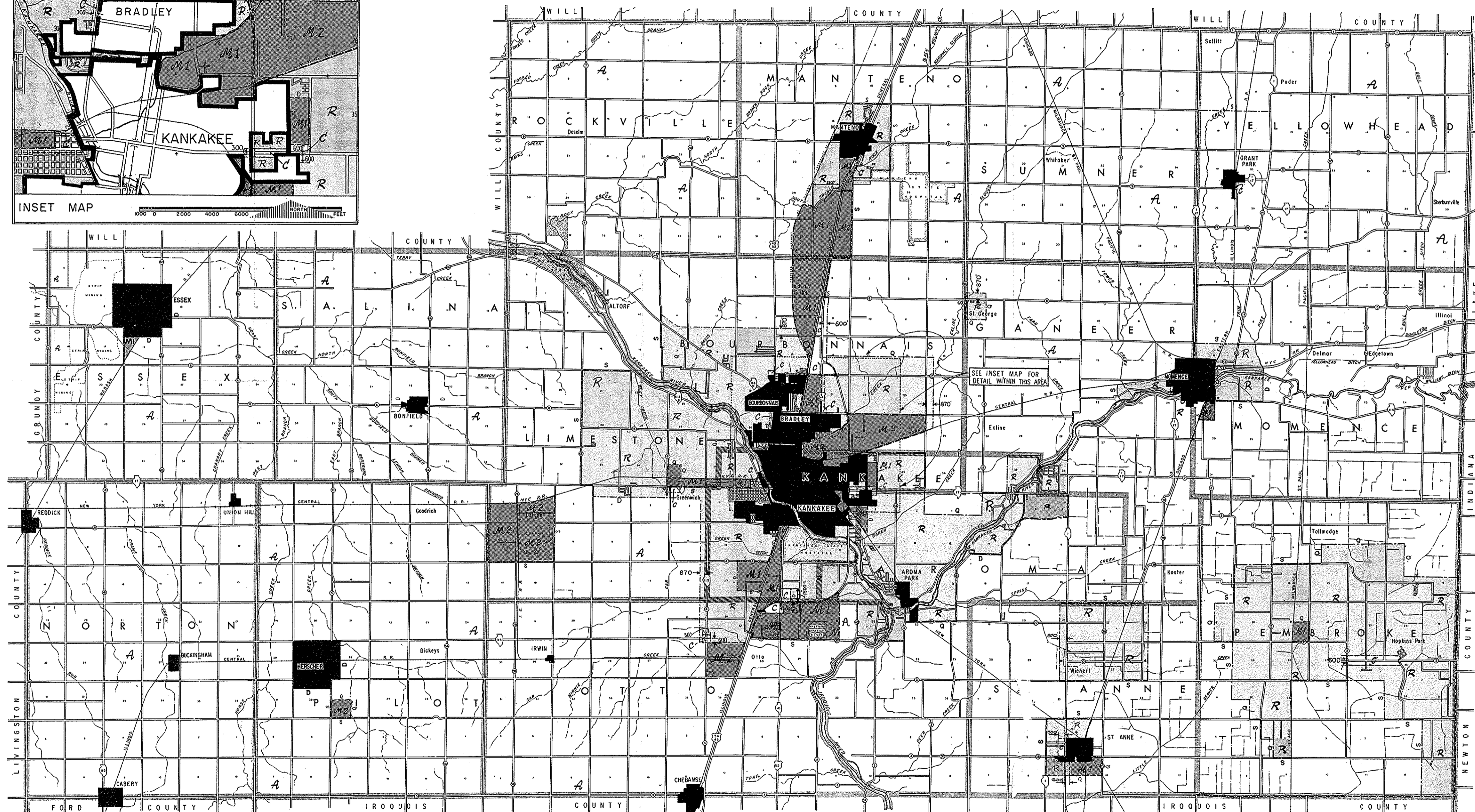
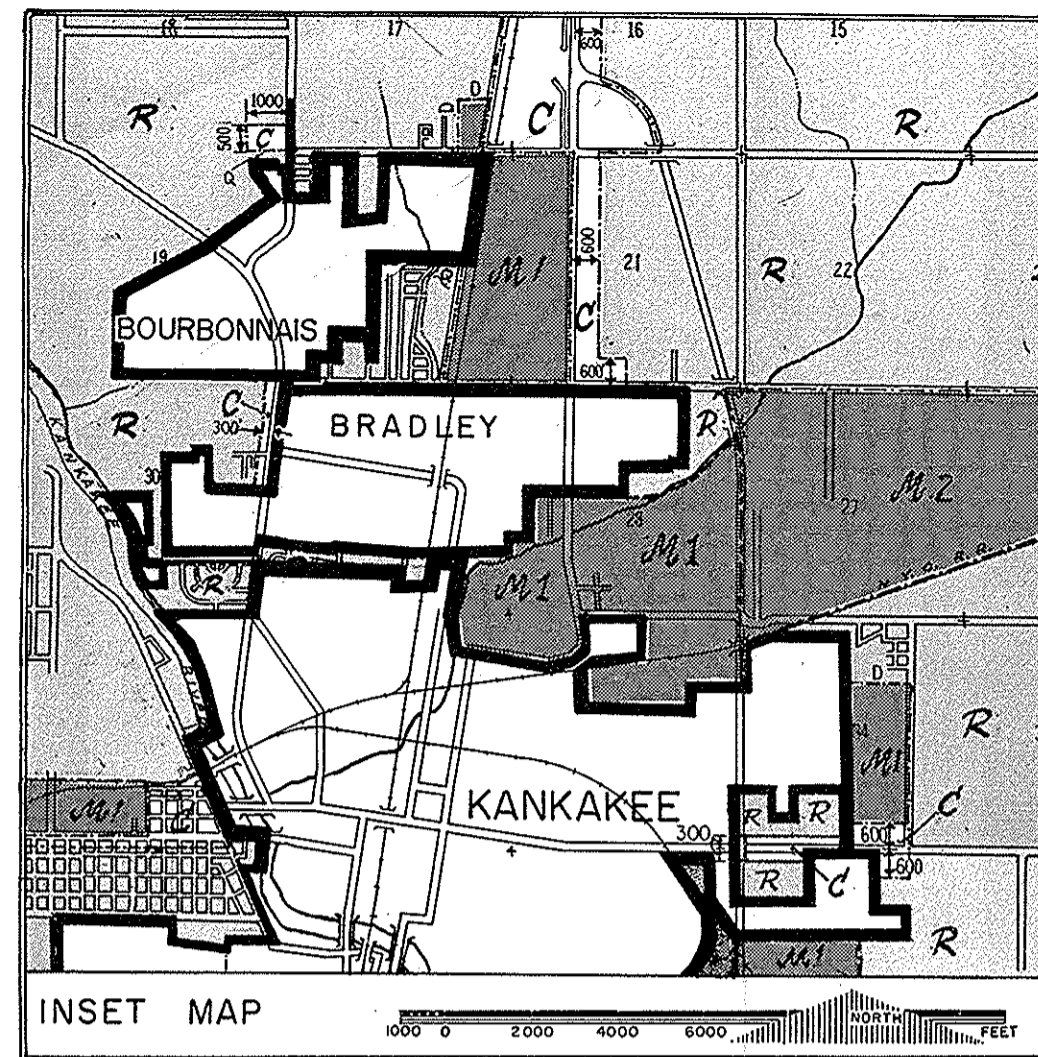
ZONING DISTRICT MAP

KANKAKEE COUNTY ILLINOIS

ADOPTED — MARCH 21, 1967



REVISIONS	



ZONING DISTRICTS

- A - AGRICULTURE A
- R - SINGLE FAMILY RESIDENCE R
- B - BUSINESS B
- C - COMMERCIAL C
- M1 - RESTRICTED MANUFACTURING M1
- M2 - GENERAL MANUFACTURING M2
- INCORPORATED AREAS

DISTRICT BOUNDARY LINES ARE EITHER: THE CENTER LINES OF RAILROADS, HIGHWAYS, STREETS, ALLEYS, EASEMENTS, OR WATERWAYS; THE BOUNDARY LINES OF SECTIONS (S), QUARTER SECTIONS (Q), DIVISIONS OF SECTIONS (D), OR TRACTS AND LOTS; OR SUCH LINES EXTENDED UNLESS OTHERWISE INDICATED.

WHEREVER A DISTRICT IS INDICATED AS A STRIP ADJACENT TO AND PARALLELING A STREET OR HIGHWAY, AND THE BOUNDARIES ARE NOT LOCATED AS SET FORTH ABOVE, THE DEPTH OF SUCH STRIPS SHALL BE IN ACCORDANCE WITH DIMENSIONS SHOWN ON THE MAP MEASURED AT RIGHT ANGLES FROM THE CENTER LINES OF THE STREET OR HIGHWAY, AND THE LENGTH OF FRONTAGE SHALL BE IN ACCORDANCE WITH DIMENSIONS SHOWN ON THE MAP FROM SECTION, QUARTER-SECTION, OR DIVISION LINES, OR CENTER LINES OF STREETS, HIGHWAYS, OR RAILROAD RIGHTS-OF-WAY UNLESS OTHERWISE INDICATED.